



'It was time to update our country home'



Patterned wallpaper and pretty floral accessories add a contemporary feel to this historic Suffolk house

Words **STEPHANIE SMITH**
Photography **COLIN POOLE**

WHO LIVES HERE

Penny and Richard Ballard, both former solicitors, have owned this 17th-century Grade II-listed property near Bury St Edmunds for 30 years. 'We decided to update it three years ago and asked interior designer Susie Stocks to add colour and character to each room with statement pieces, tactile fabrics and unusual wallpapers,' says Penny, who has also started to rent out her home occasionally.



MIX AND MATCH

The Shaker-style kitchen is the Fairford in Dove Grey from Howdens, the quartz worktops are from Worktop Warehouse and the glass and chrome handles are from Graham & Green. A large island unit provides an additional work surface.



STATEMENT SEATING

A large L-shaped linen sofa, the Otto from Sofa.com, is the centrepiece of the open drawing room and has been teamed with colourful cushions and a large rug. All the floors in the house were renovated rather than replaced, and some of the floorboards originally came from trees that grew on the estate.

FAMILY DINING

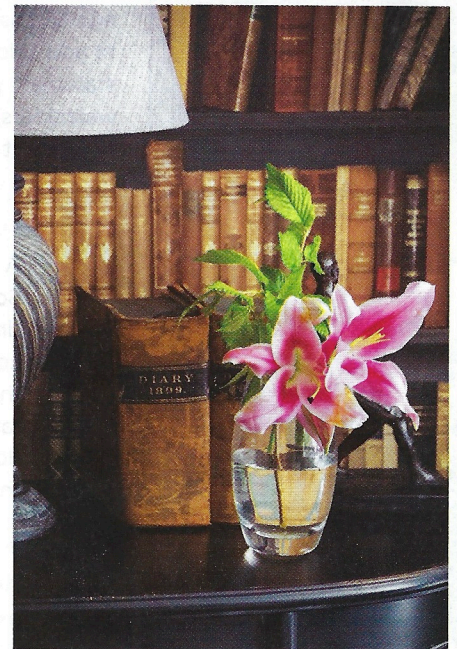
An old glasshouse was taken down and the extra space was used to create a large dining area with a table big enough to seat 10. French-style chairs from Chic Antique add a relaxed feel and the walls are painted in Farrow & Ball Dix Blue and Green Blue.





▼ DECEIVE THE EYE

The snug appears to be full with books, but it's actually papered in Old Library wallpaper by Photowall. Black shelving in the wallpaper is complemented by half console tables by Coach House.



HOME COMFORTS

When Penny's four children and four grandchildren come to stay, the Bluebell sofas from Sofa.com are big enough for everyone to relax on. The panelling is painted in Farrow & Ball Green Smoke and the checked curtains are from Prestigious Textiles.



FASHIONABLE FOLIAGE

The garden room extension created a blank wall that needed livening up. The solution was leaf wallpaper by Photowall. The sofas are from One World, the cushions are from Designers Guild and the mirror is from Coach House.





ROMANTIC DECOR

There are two main bedrooms in the house and this one has a glamorous, feminine feel, with decorative mirrored wardrobes and furniture from Coach House, which pick up the circular theme. Susie advised us that in a room of this size bedside tables would be dwarfed, so we've gone for two chests of drawers instead,' says Penny.



▲ CIRCULAR DESIGN

Marble tiles from Mandarin Stone are used on the walls and floor to create a statement in the en suite. Fittings are kept simple, with drama added by an ornate Coach House cabinet and a Graham & Green round mirror.



Throw, £42, National Trust Shop



Hanbury lamp, £100, Laura Ashley at Där Lighting



Ullswater double bed, £899, *Country Living* Collection at Dreams



Ariane mirror, £175, Cox & Cox



Bench ottoman, £355, Sweetpea & Willow



Capiz tray, £62, Luxeology



Amalfi pitcher, £16, Dunelm



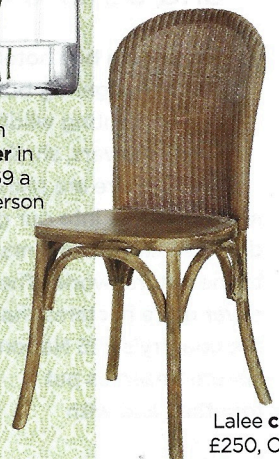
Stripe cushion, £34.99, Dobbies

Quilted velvet cushion, £35, Monsoon



Umberto vase, £36 (flowers not included), LSA International

Yarton wallpaper in Moss, £69 a roll, Sanderson



Lalee chair, £250, Oka

Shop the LOOK

TAKE INSPIRATION FROM PENNY'S STYLISH HOME

Old Cotswold Blue matt emulsion, £38 for 2.5L, *Country Living* Collection at Homebase

GET THE LOOK COMPILED BY: CARA LASKARIS, NETHERHALLESTATE.COM